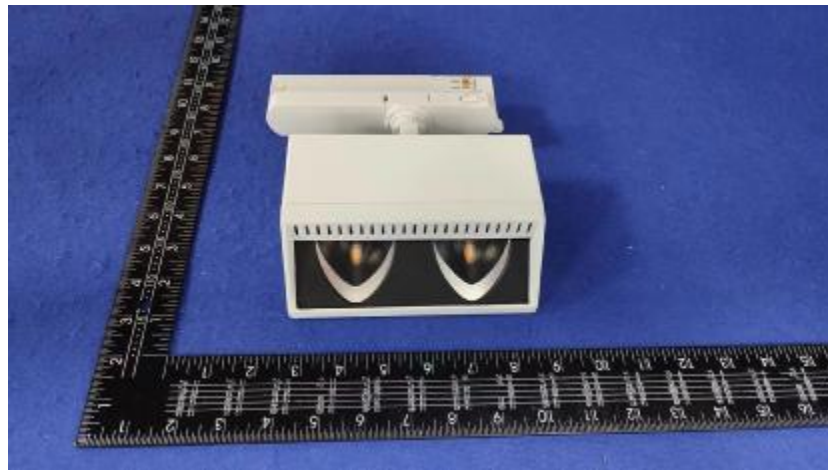


### Luminaire Photograph



Light Output Ratio:	77.8%	
Luminaire Power:	27.03 W	
SHR Nominal:	0.00	Calculated using the TM5
SHR Maximum:	1.00	fine grid method.

C Range: 0 - 360DEG  
C Interval: 30.0DEG  
Test Speed: HIGH  
Temperature: 25.3DEG  
Operators: Zoe  
Test Date: 2023-1-12

g Range: 0 - 180DEG  
g Interval: 1.0DEG  
Test System: EVERFINE GO-SPEX500\_V1 SYSTEM V2.00.416  
Humidity: 65.0%  
Test Distance: 3.160m [K=1.0000]  
Remarks: LAMP: CLU028-1204C4-303H5M3-F1 Ra:90  
REFLECTOR: AP-060D-WW  
DRIVER: PRO-UA430 700mA  
30minutes warm-up

## LUMINOUS INTENSITY DISTRIBUTION DIAGRAM

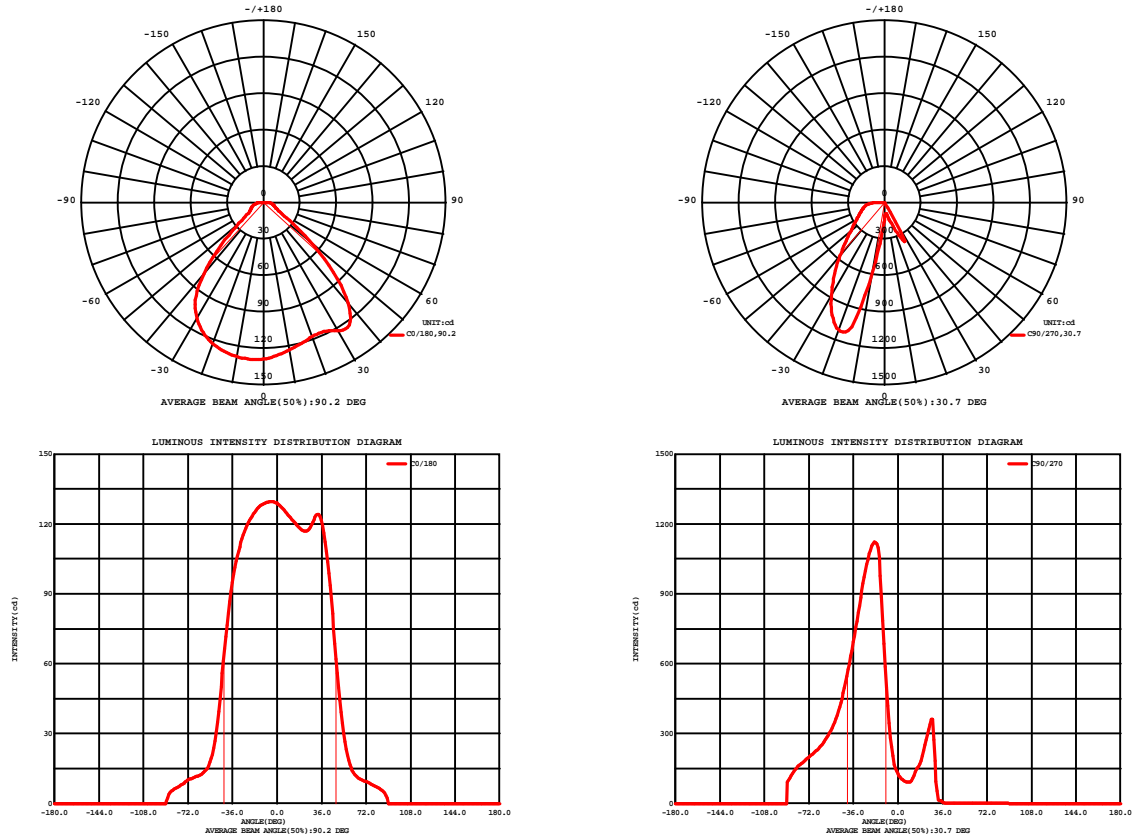


Fig. C0/C180

Fig. C90/C270

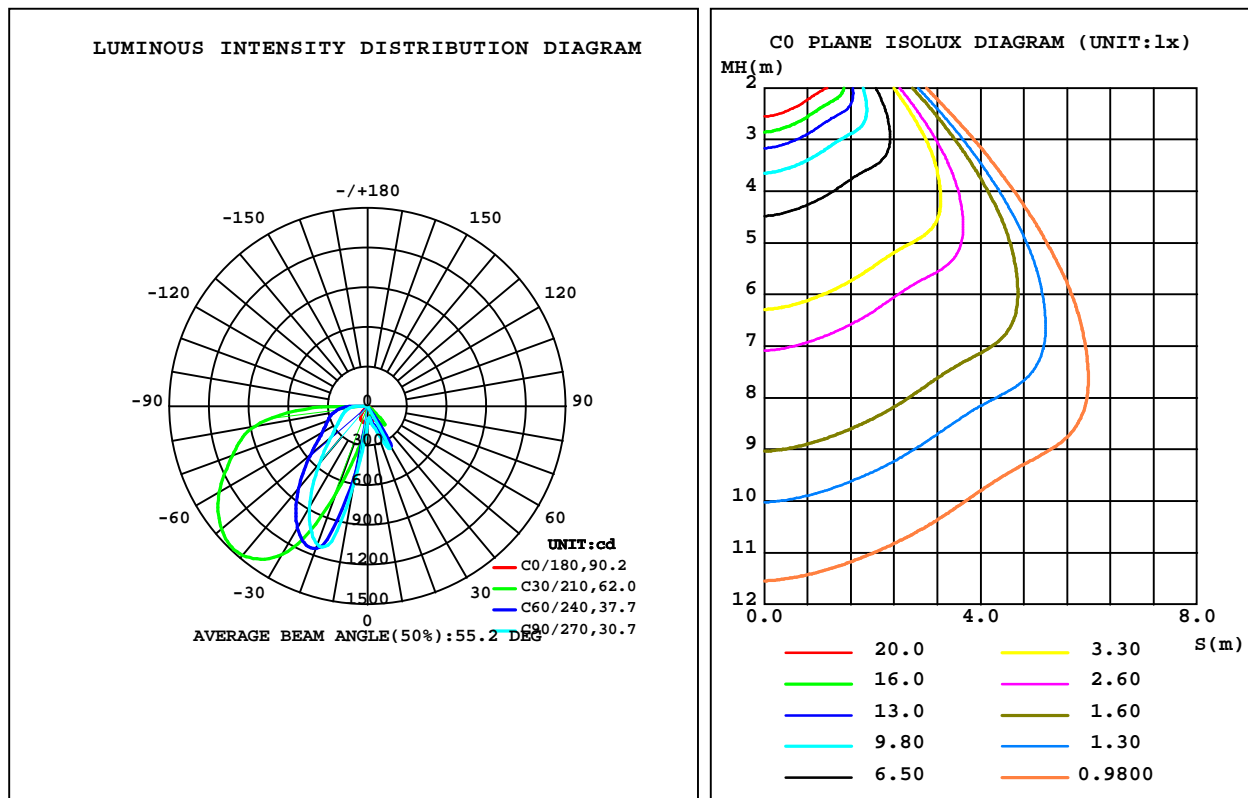
C Range: 0 - 360DEG  
C Interval: 30.0DEG  
Test Speed: HIGH  
Temperature: 25.3DEG  
Operators: Zoe  
Test Date: 2023-1-12

Range: 0 - 180DEG  
Interval: 1.0DEG  
Test System: EVERFINE GO-SPEX500\_V1 SYSTEM V2.00.416  
Humidity: 65.0%  
Test Distance: 3.160m [K=1.0000]  
Remarks: LAMP: CLU028-1204C4-303H5M3-F1 Ra: 90  
REFLECTOR: AP-060D-WW  
DRIVER: PRO-UA430 700mA  
30minutes warm-up

## LUMINAIRE PHOTOMETRIC TEST REPORT

Test:U:220.28V I:0.1280A P:27.026W PF:0.9558 Freq:49.99Hz Lamp Flux:2614.7x1 lm		
NAME: 2219.200B	TYPE:	WEIGHT:
SPEC.:3000K	DIM.:	SERIAL No.:2301120041
MFR.: RISE	SUR.:0.005904m2	Shielding Angle:

DATA OF LAMP		PHOTOMETRIC DATA Eff: 75.22 lm/W			
MODEL	CITIZEN	Imax(cd)	1558	S/MH(C0/180)	1.21
NOMINAL POWER(W)	27	LOR(%)	77.8	S/MH(C90/270)	2.47
RATED VOLTAGE(V)	220	TOTAL FLUX(lm)	2033.0	h UP,DN(C0-180)	0.0,5.1
NOMINAL FLUX(lm)	2614.7	CIE CLASS	DIRECT	h UP,DN(C180-360)	0.0,72.7
LAMPS INSIDE	1	h up(%)	0.0	CIBSE SHR NOM	0.00
TEST VOLTAGE(V)	220	h down(%)	77.8	CIBSE SHR MAX	1.00



C Range: 0 - 360DEG  
C Interval: 30.0DEG  
Test Speed: HIGH  
Temperature:25.3DEG  
Operators:Zoe  
Test Date:2023-1-12

g Range: 0 - 180DEG  
Interval: 1.0DEG  
Test System:EVERFINE GO-SPEX500\_V1 SYSTEM V2.00.416  
Humidity:65.0%  
Test Distance:3.160m [K=1.0000]  
Remarks: LAMP:CLU028-1204C4-303H5M3-F1 Ra:90  
REFLECTOR:AP-060D-WW  
DRIVER:PRO-UA430 700mA  
30minutes warm-up

## ZONAL FLUX DIAGRAM

### ZONAL FLUX DIAGRAM:

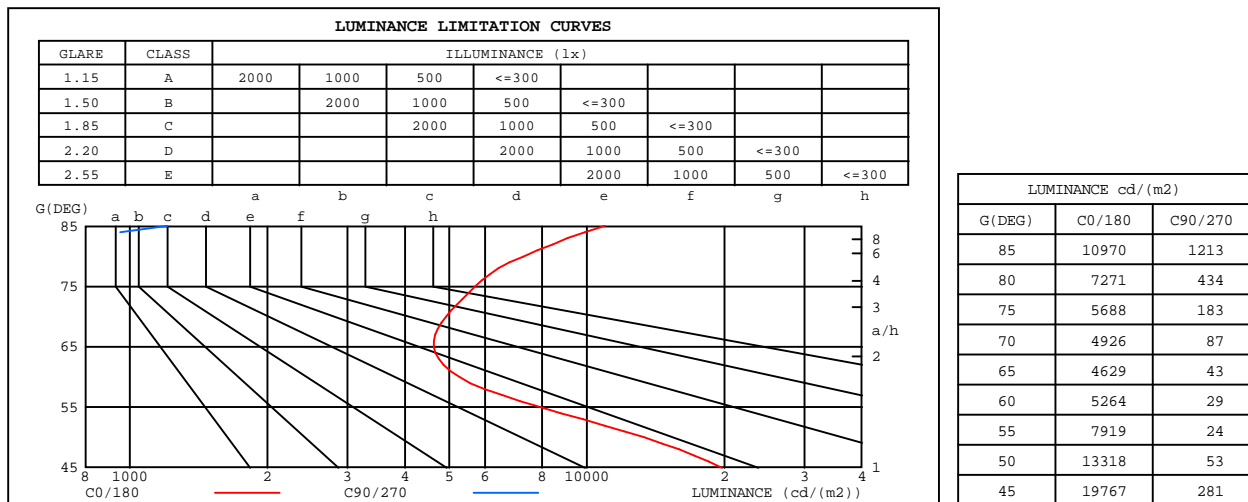
g	C0	C45	C90	C135	C180	C225	C270	C315	g	F zone	F total	%lum, lamp
10	123.2	90.86	91.12	95.79	128.7	357.0	587.1	351.3	0- 10	16.40	16.40	0.81,0.63
20	117.6	114.9	204.0	122.8	123.3	919.4	1113	946.1	10- 20	107.7	124.1	6.1,4.75
30	121.8	213.3	182.8	236.0	110.1	1179	883.8	1231	20- 30	255.8	379.8	18.7,14.5
40	108.2	91.15	2.143	111.1	76.62	1145	575.4	1183	30- 40	329.3	709.2	34.9,27.1
50	49.84	30.72	0.2000	16.97	26.89	1005	363.8	1028	40- 50	338.5	1048	51.5,40.1
60	15.32	2.020	0.0836	1.889	12.96	850.9	261.9	860.4	50- 60	305.9	1354	66.6,51.8
70	9.810	0.3187	0.1749	0.3379	10.49	709.0	206.1	711.4	60- 70	277.9	1632	80.3,62.4
80	7.351	0.9758	0.4411	1.031	7.071	562.2	162.3	575.0	70- 80	244.2	1876	92.3,71.7
90	0	0	0	0	0	0	0	0	80- 90	157.2	2033	100,77.8
100	0	0	0	0	0	0	0	0	90-100	0	2033	100,77.8
110	0	0	0	0	0	0	0	0	100-110	0	2033	100,77.8
120	0	0	0	0	0	0	0	0	110-120	0	2033	100,77.8
130	0	0	0	0	0	0	0	0	120-130	0	2033	100,77.8
140	0	0	0	0	0	0	0	0	130-140	0	2033	100,77.8
150	0	0	0	0	0	0	0	0	140-150	0	2033	100,77.8
160	0	0	0	0	0	0	0	0	150-160	0	2033	100,77.8
170	0	0	0	0	0	0	0	0	160-170	0	2033	100,77.8
180	0	0	0	0	0	0	0	0	170-180	0	2033	100,77.8
DEG	LUMINOUS INTENSITY:cd									UNIT:lm		

C Range: 0 - 360DEG  
C Interval: 30.0DEG  
Test Speed: HIGH  
Temperature:25.3DEG  
Operators:Zoe  
Test Date:2023-1-12

g Range: 0 - 180DEG  
Interval: 1.0DEG  
Test System:EVERFINE GO-SPEX500\_V1 SYSTEM V2.00.416  
Humidity:65.0%  
Test Distance:3.160m [K=1.0000]  
Remarks: LAMP:CLU028-1204C4-303H5M3-F1 Ra:90  
REFLECTOR:AP-060D-WW  
DRIVER:PRO-UA430 700mA  
30minutes warm-up

### LUMINANCE LIMITATION CURVES

Test:U:220.28V I:0.1280A P:27.026W PF:0.9558 Freq:49.99Hz Lamp Flux:2614.7x1 lm		
NAME: 2219.200B	TYPE:	WEIGHT:
SPEC.:3000K	DIM.:	SERIAL No.:2301120041
MFR.: RISE	SUR.:0.005904m2	Shielding Angle:



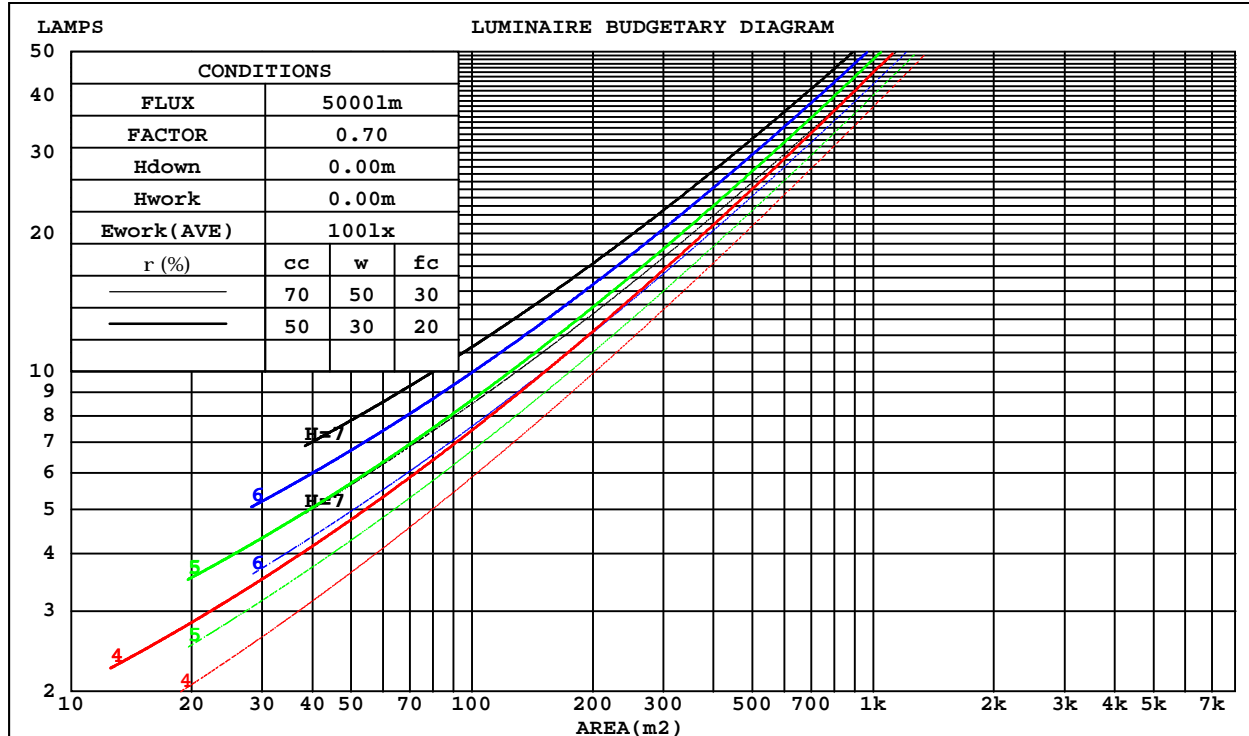
C Range: 0 - 360DEG  
C Interval: 30.0DEG  
Test Speed: HIGH  
Temperature:25.3DEG  
Operators:Zoe  
Test Date:2023-1-12

G Range: 0 - 180DEG  
G Interval: 1.0DEG  
Test System:EVERFINE GO-SPEX500\_V1 SYSTEM V2.00.416  
Humidity:65.0%  
Test Distance:3.160m [K=1.0000]  
Remarks: LAMP:CLU028-1204C4-303H5M3-F1 Ra:90  
REFLECTOR:AP-060D-WW  
DRIVER:PRO-UA430 700mA  
30minutes warm-up

## CU AND LUMINAIRE BUDGETARY ESTIMATE DIAGRAM

Test:U:220.28V I:0.1280A P:27.026W PF:0.9558 Freq:49.99Hz Lamp Flux:2614.7x1 lm		
NAME: 2219.200B	TYPE:	WEIGHT:
SPEC.:3000K	DIM.:	SERIAL No.:2301120041
MFR.: RISE	SUR.:0.005904m2	Shielding Angle:

rcc	80%			70%			50%			30%			10%			0
r <sub>w</sub>	50%	30%	10%	50%	30%	10%	50%	30%	10%	50%	30%	10%	50%	30%	10%	0
r <sub>fc</sub>	20%			20%			20%			20%			20%			0
RCR	RCR:Room Cavity Ratio			Coefficients of Utilization(CU)												
0.0	.93	.93	.93	.90	.90	.90	.86	.86	.86	.83	.83	.83	.79	.79	.79	.78
1.0	.77	.73	.69	.75	.71	.67	.72	.68	.65	.69	.66	.63	.66	.63	.61	.59
2.0	.65	.59	.54	.64	.58	.53	.61	.56	.52	.58	.54	.50	.56	.52	.49	.47
3.0	.56	.49	.43	.55	.48	.43	.53	.47	.42	.50	.45	.41	.48	.44	.40	.38
4.0	.49	.42	.36	.48	.41	.35	.46	.40	.35	.44	.39	.34	.42	.38	.34	.32
5.0	.44	.36	.30	.43	.35	.30	.41	.34	.29	.39	.34	.29	.38	.33	.29	.27
6.0	.39	.31	.26	.38	.31	.25	.37	.30	.25	.35	.29	.25	.34	.29	.25	.23
7.0	.35	.27	.22	.34	.27	.22	.33	.27	.22	.32	.26	.22	.31	.25	.22	.20
8.0	.32	.24	.19	.31	.24	.19	.30	.24	.19	.29	.23	.19	.28	.23	.19	.17
9.0	.29	.22	.17	.28	.22	.17	.27	.21	.17	.26	.21	.17	.26	.20	.17	.15
10.0	.26	.20	.15	.26	.19	.15	.25	.19	.15	.24	.19	.15	.24	.19	.15	.13



C Range: 0 - 360DEG  
C Interval: 30.0DEG  
Test Speed: HIGH  
Temperature:25.3DEG  
Operators:Zoe  
Test Date:2023-1-12

g Range: 0 - 180DEG  
Interval: 1.0DEG  
Test System:EVERFINE GO-SPEX500\_V1 SYSTEM V2.00.416  
Humidity:65.0%  
Test Distance:3.160m [K=1.0000]  
Remarks: LAMP:CLU028-1204C4-303H5M3-F1 Ra:90  
REFLECTOR:AP-060D-WW  
DRIVER:PRO-UA430 700mA  
30minutes warm-up

### WEC AND CCEC

Test:U:220.28V I:0.1280A P:27.026W PF:0.9558 Freq:49.99Hz Lamp Flux:2614.7x1 lm		
NAME: 2219.200B	TYPE:	WEIGHT:
SPEC.:3000K	DIM.:	SERIAL No.:2301120041
MFR.: RISE	SUR.:0.005904m2	Shielding Angle:

rcc	80%			70%			50%			30%			10%			0
rw	50%	30%	10%	50%	30%	10%	50%	30%	10%	50%	30%	10%	50%	30%	10%	0
rfc	20%			20%			20%			20%			20%			0
RCR	RCR:Room Cavity Ratio						Wall Exitance Coefficients(WEC)									
0.0																
1.0	.314	.179	.057	.309	.176	.056	.298	.171	.055	.288	.166	.053	.279	.162	.052	
2.0	.274	.150	.046	.269	.148	.046	.259	.144	.045	.251	.141	.044	.242	.137	.043	
3.0	.244	.130	.039	.239	.128	.039	.231	.125	.038	.223	.122	.037	.216	.119	.037	
4.0	.219	.114	.034	.215	.113	.033	.208	.110	.033	.201	.108	.033	.194	.106	.032	
5.0	.199	.102	.029	.196	.100	.029	.189	.098	.029	.183	.096	.029	.177	.095	.028	
6.0	.182	.091	.026	.179	.091	.026	.173	.089	.026	.168	.087	.026	.163	.086	.025	
7.0	.168	.083	.024	.165	.082	.023	.160	.081	.023	.155	.080	.023	.151	.078	.023	
8.0	.156	.076	.021	.153	.076	.021	.149	.074	.021	.144	.073	.021	.140	.072	.021	
9.0	.145	.070	.020	.143	.070	.020	.139	.069	.019	.135	.068	.019	.131	.067	.019	
10.0	.136	.065	.018	.134	.065	.018	.130	.064	.018	.127	.063	.018	.123	.062	.018	

rcc	80%			70%			50%			30%			10%			0
rw	50%	30%	10%	50%	30%	10%	50%	30%	10%	50%	30%	10%	50%	30%	10%	0
rfc	20%			20%			20%			20%			20%			0
RCR	RCR:Room Cavity Ratio						Ceiling Cavity Exitance Coefficients(CCEC)									
0.0	.148	.148	.148	.127	.127	.127	.086	.086	.086	.050	.050	.050	.016	.016	.016	
1.0	.145	.121	.099	.124	.104	.085	.085	.071	.059	.049	.041	.034	.016	.013	.011	
2.0	.140	.102	.071	.120	.088	.061	.082	.061	.043	.047	.035	.025	.015	.011	.008	
3.0	.134	.089	.053	.115	.077	.046	.079	.053	.032	.046	.031	.019	.015	.010	.006	
4.0	.128	.079	.042	.110	.068	.036	.076	.048	.025	.044	.028	.015	.014	.009	.005	
5.0	.122	.071	.034	.105	.062	.029	.072	.043	.021	.042	.025	.012	.013	.008	.004	
6.0	.116	.065	.028	.100	.056	.024	.069	.039	.017	.040	.023	.010	.013	.008	.003	
7.0	.110	.060	.024	.095	.052	.021	.066	.036	.015	.038	.021	.009	.012	.007	.003	
8.0	.105	.055	.021	.090	.048	.018	.063	.034	.013	.036	.020	.008	.012	.006	.003	
9.0	.100	.051	.018	.086	.045	.016	.060	.031	.011	.035	.018	.007	.011	.006	.002	
10.0	.095	.048	.016	.082	.042	.014	.057	.029	.010	.033	.017	.006	.011	.006	.002	

C Range: 0 - 360DEG  
C Interval: 30.0DEG  
Test Speed: HIGH  
Temperature:25.3DEG  
Operators:Zoe  
Test Date:2023-1-12

g Range: 0 - 180DEG  
Interval: 1.0DEG  
Test System:EVERFINE GO-SPEX500\_V1 SYSTEM V2.00.416  
Humidity:65.0%  
Test Distance:3.160m [K=1.0000]  
Remarks: LAMP:CLU028-1204C4-303H5M3-F1 Ra:90  
REFLECTOR:AP-060D-WW  
DRIVER:PRO-UA430 700mA  
30minutes warm-up

## UGR(Unified Glare Rating) Table

Test:U:220.28V I:0.1280A P:27.026W PF:0.9558 Freq:49.99Hz Lamp Flux:2614.7x1 lm										
NAME: 2219.200B					TYPE:			WEIGHT:		
SPEC.:3000K					DIM.:			SERIAL No.:2301120041		
MFR.: RISE					SUR.:0.005904m2			Shielding Angle:		
ceiling/cavity	0.7	0.7	0.5	0.5	0.3	0.7	0.7	0.5	0.5	0.3
walls	0.5	0.3	0.5	0.3	0.3	0.5	0.3	0.5	0.3	0.3
working plane	0.2	0.2	0.2	0.2	0.2	0.2	0.2	0.2	0.2	0.2
Room dimensions	Viewed crosswise					Viewed endwise				
x = 2H y = 2H	14.4	16.1	14.7	16.3	16.6	8.2	9.9	8.5	10.1	10.3
3H	14.4	15.9	14.7	16.2	16.4	8.0	9.5	8.3	9.8	10.0
4H	14.4	15.9	14.7	16.2	16.5	7.8	9.4	8.2	9.6	9.9
6H	14.6	16.0	15.0	16.3	16.6	7.7	9.2	8.1	9.4	9.7
8H	14.8	16.2	15.1	16.5	16.8	7.7	9.1	8.0	9.4	9.7
12H	15.0	16.4	15.4	16.7	17.0	7.7	9.0	8.0	9.3	9.6
4H 2H	14.1	15.6	14.4	15.8	16.1	7.9	9.4	8.2	9.7	9.9
3H	14.0	15.4	14.4	15.7	16.0	7.6	9.0	8.0	9.3	9.6
4H	14.1	15.3	14.5	15.7	16.0	7.5	8.8	7.9	9.1	9.5
6H	14.4	15.5	14.8	15.9	16.3	7.5	8.6	7.9	8.9	9.3
8H	14.7	15.8	15.1	16.1	16.5	7.4	8.5	7.9	8.9	9.3
12H	15.1	16.1	15.6	16.5	16.9	7.4	8.4	7.9	8.8	9.2
8H 4H	13.9	15.0	14.4	15.4	15.8	7.4	8.5	7.8	8.8	9.2
6H	14.3	15.2	14.7	15.6	16.0	7.4	8.3	7.8	8.7	9.1
8H	14.7	15.5	15.1	15.9	16.4	7.4	8.2	7.9	8.6	9.1
12H	15.2	16.0	15.7	16.4	16.9	7.5	8.2	8.0	8.6	9.1
12H 4H	13.9	14.9	14.3	15.3	15.7	7.4	8.4	7.8	8.8	9.2
6H	14.3	15.1	14.7	15.5	16.0	7.4	8.2	7.9	8.6	9.1
8H	14.6	15.4	15.1	15.8	16.3	7.4	8.2	7.9	8.6	9.1
Variations with the observer position at spacings:										
S = 1.0H	+ 3.6 / - 3.7					+ 3.6 / - 7.5				
1.5H	+ 2.2 / - 5.5					+ 8.4 / - 7.4				
2.0H	+ 5.4 / - 4.7					+ 4.1 / - 1.6				

CIE Pub.117, 2615 lm Total Lamp Luminous Flux Corrected ( $8\log(F/F_0) = 3.3$ )  
Area: 0.005904 m2

C Range: 0 - 360DEG  
C Interval: 30.0DEG  
Test Speed: HIGH  
Temperature:25.3DEG  
Operators:Zoe  
Test Date:2023-1-12

g Range: 0 - 180DEG  
g Interval: 1.0DEG  
Test System:EVERFINE GO-SPEX500\_V1 SYSTEM V2.00.416  
Humidity:65.0%  
Test Distance:3.160m [K=1.0000]  
Remarks: LAMP:CLU028-1204C4-303H5M3-F1 Ra:90  
REFLECTOR:AP-060D-WW  
DRIVER:PRO-UA430 700mA  
30minutes warm-up



### UTILIZATION FACTORS TABLE

Test:U:220.28V I:0.1280A P:27.026W PF:0.9558 Freq:49.99Hz Lamp Flux:2614.7x1 lm		
NAME: 2219.200B	TYPE:	WEIGHT:
SPEC.:3000K	DIM.:	SERIAL No.:2301120041
MFR.: RISE	SUR.:0.005904m2	Shielding Angle:

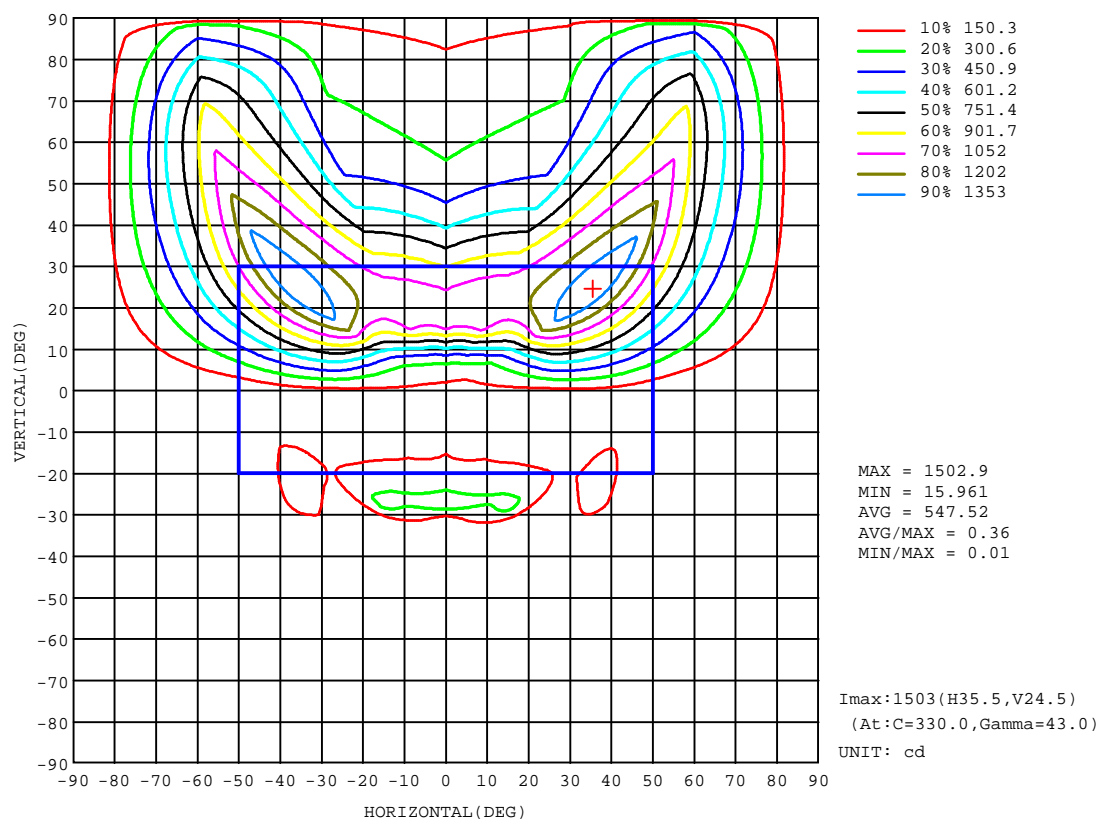
REFLECTANCE										
Ceiling	0.8	0.8	0.8	0.7	0.7	0.7	0.5	0.5	0.5	0
Walls	0.7	0.5	0.3	0.7	0.5	0.3	0.7	0.5	0.3	0
Working plane	0.2	0.2	0.2	0.2	0.2	0.2	0.2	0.2	0.2	0
ROOM INDEX	UTILIZATION FACTORS(PERCENT) $k(RI) \times RCR = 5$									
k = 0.60	41	31	25	40	31	25	39	30	25	20
0.80	48	38	32	47	38	32	46	37	31	25
1.00	54	45	38	53	44	38	52	46	38	31
1.25	60	50	44	59	50	44	56	49	43	37
1.50	64	55	48	62	54	48	60	53	47	41
2.00	70	61	55	68	60	55	65	59	54	47
2.50	73	66	60	71	64	59	68	62	58	50
3.00	76	69	64	74	68	63	71	66	61	54
4.00	79	74	69	77	72	68	74	70	66	58
5.00	82	77	73	80	75	71	76	72	69	61
ROOM INDEX	UF(total)									Direct
According to DIN EN 13032-2 2004			Suspended					SHRNOM = 1.25		

C Range: 0 - 360DEG  
C Interval: 30.0DEG  
Test Speed: HIGH  
Temperature:25.3DEG  
Operators:Zoe  
Test Date:2023-1-12

g Range: 0 - 180DEG  
g Interval: 1.0DEG  
Test System:EVERFINE GO-SPEX500\_V1 SYSTEM V2.00.416  
Humidity:65.0%  
Test Distance:3.160m [K=1.0000]  
Remarks: LAMP:CLU028-1204C4-303H5M3-F1 Ra:90  
REFLECTOR:AP-060D-WW  
DRIVER:PRO-UA430 700mA  
30minutes warm-up

## ISOCANDELA DIAGRAM

Test:U:220.28V I:0.1280A P:27.026W PF:0.9558 Freq:49.99Hz Lamp Flux:2614.7x1 lm		
NAME: 2219.200B	TYPE:	WEIGHT:
SPEC.:3000K	DIM.:	SERIAL No.:2301120041
MFR.: RISE	SUR.:0.005904m2	Shielding Angle:

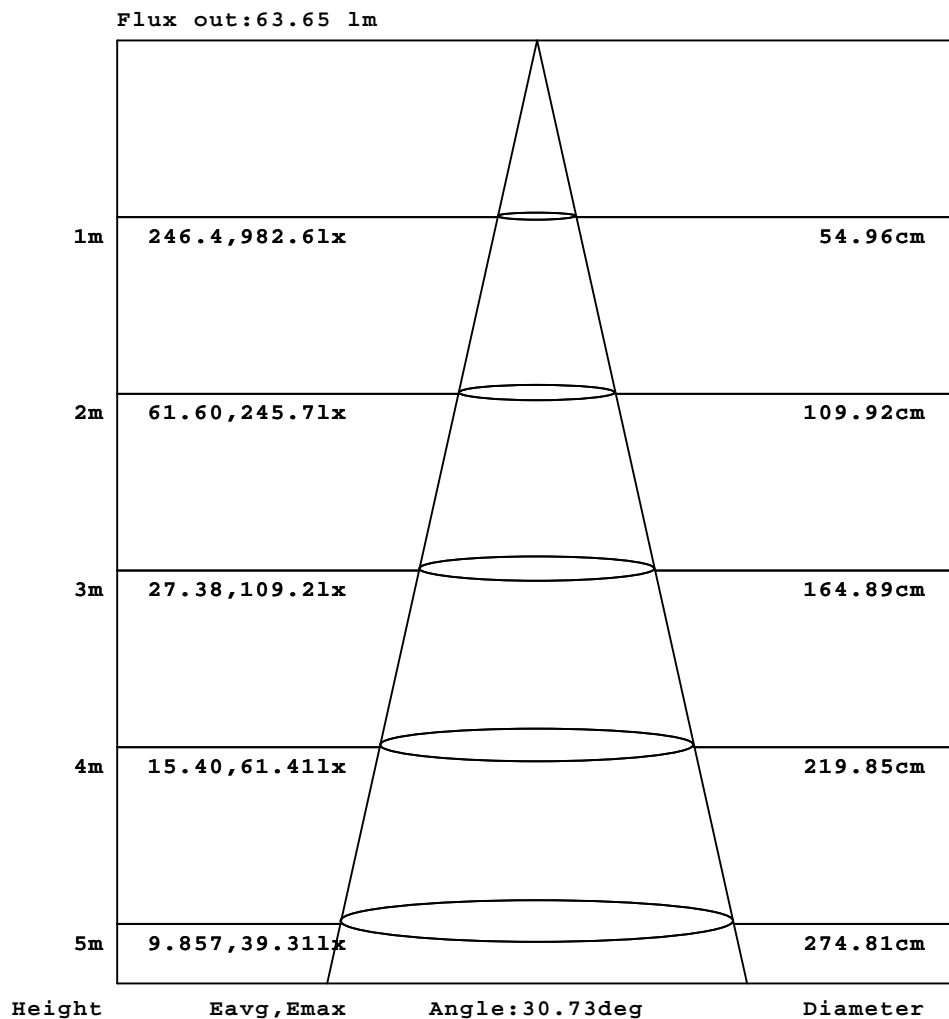


C Range: 0 - 360DEG  
C Interval: 30.0DEG  
Test Speed: HIGH  
Temperature:25.3DEG  
Operators:Zoe  
Test Date:2023-1-12

Range: 0 - 180DEG  
Interval: 1.0DEG  
Test System:EVERFINE GO-SPEX500\_V1 SYSTEM V2.00.416  
Humidity:65.0%  
Test Distance:3.160m [K=1.0000]  
Remarks: LAMP:CLU028-1204C4-303H5M3-F1 Ra:90  
REFLECTOR:AP-060D-WW  
DRIVER:PRO-UA430 700mA  
30minutes warm-up

### AAI Figure

Test:U:220.28V I:0.1280A P:27.026W PF:0.9558 Freq:49.99Hz Lamp Flux:2614.7x1 lm		
NAME: 2219.200B	TYPE:	WEIGHT:
SPEC.:3000K	DIM.:	SERIAL No.:2301120041
MFR.: RISE	SUR.:0.005904m2	Shielding Angle:



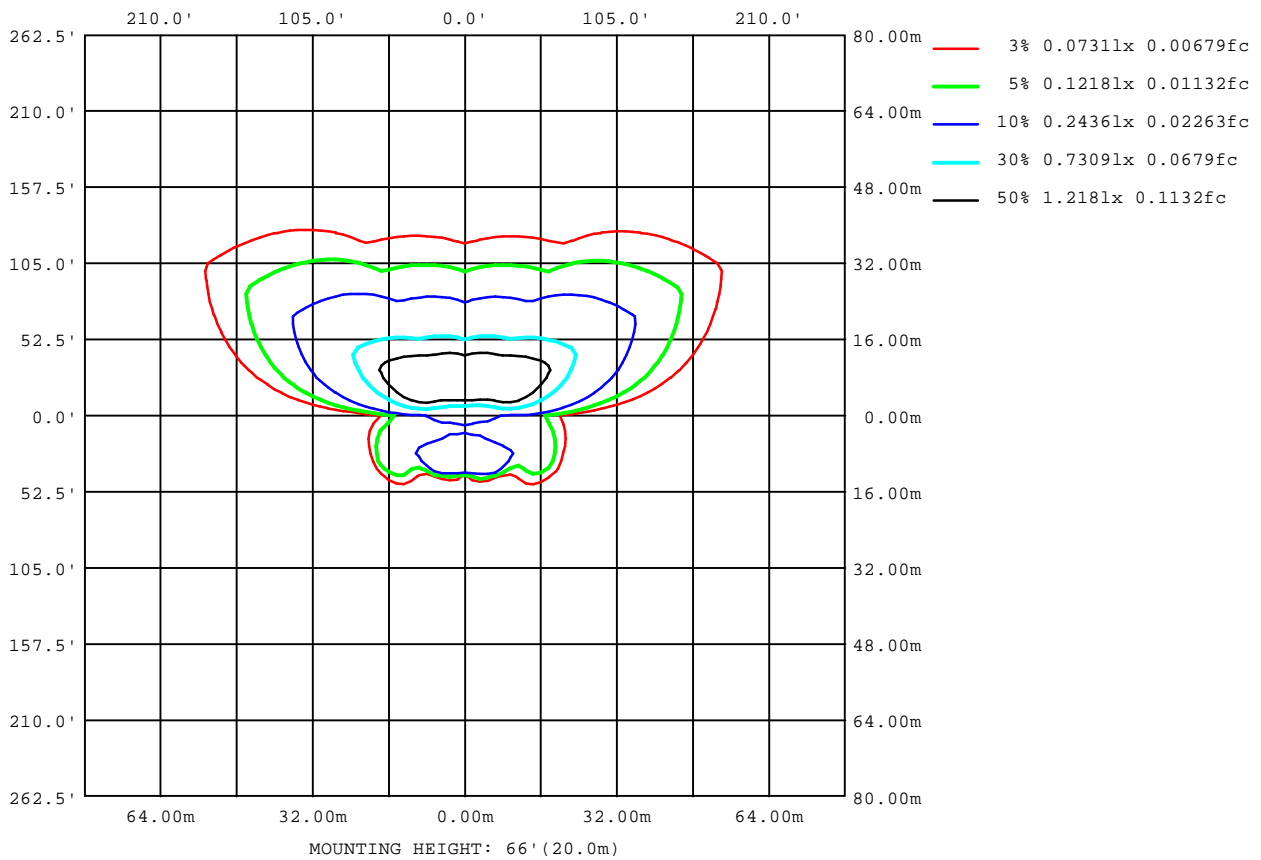
Note:The Curves indicate the illuminated area and the average illumination when the luminaire is at different distance.

C Range: 0 - 360DEG  
C Interval: 30.0DEG  
Test Speed: HIGH  
Temperature:25.3DEG  
Operators:Zoe  
Test Date:2023-1-12

g Range: 0 - 180DEG  
Interval: 1.0DEG  
Test System:EVERFINE GO-SPEX500\_V1 SYSTEM V2.00.416  
Humidity:65.0%  
Test Distance:3.160m [K=1.0000]  
Remarks: LAMP:CLU028-1204C4-303H5M3-F1 Ra:90  
REFLECTOR:AP-060D-WW  
DRIVER:PRO-UA430 700mA  
30minutes warm-up

## ISOLUX DIAGRAM

Test:U:220.28V I:0.1280A P:27.026W PF:0.9558 Freq:49.99Hz Lamp Flux:2614.7x1 lm		
NAME: 2219.200B	TYPE:	WEIGHT:
SPEC.:3000K	DIM.:	SERIAL No.:2301120041
MFR.: RISE	SUR.:0.005904m2	Shielding Angle:



C Range: 0 - 360DEG  
C Interval: 30.0DEG  
Test Speed: HIGH  
Temperature:25.3DEG  
Operators:Zoe  
Test Date:2023-1-12

g Range: 0 - 180DEG  
Interval: 1.0DEG  
Test System:EVERFINE GO-SPEX500\_V1 SYSTEM V2.00.416  
Humidity:65.0%  
Test Distance:3.160m [K=1.0000]  
Remarks: LAMP:CLU028-1204C4-303H5M3-F1 Ra:90  
REFLECTOR:AP-060D-WW  
DRIVER:PRO-UA430 700mA  
30minutes warm-up

## LED Avg.L Report

Test:U:220.28V I:0.1280A P:27.026W PF:0.9558 Freq:49.99Hz Lamp Flux:2614.7x1 lm		
NAME: 2219.200B	TYPE:	WEIGHT:
SPEC.:3000K	DIM.:	SERIAL No.:2301120041
MFR.: RISE	SUR.:0.005904m2	Shielding Angle:

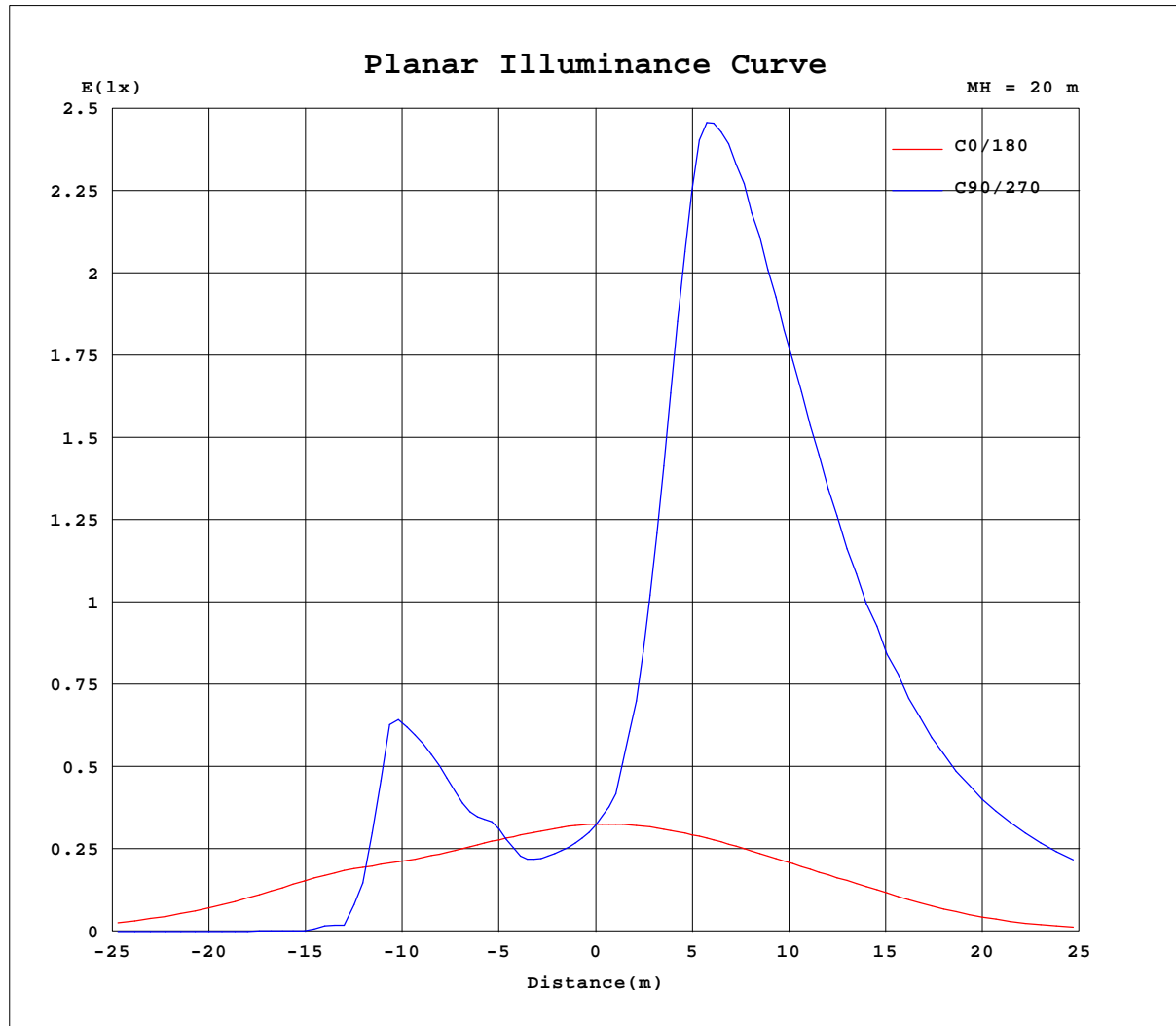
AvgL	cd/m2
L_0~180(65)av	4599
L_0~180(75)av	5663
L_0~180(85)av	10628
L_90~270(65)av	46179
L_90~270(75)av	60340
L_90~270(85)av	124480
L_45(65)av	172964
L_45(75)av	235093
L_45(85)av	453534

Standard: GB/T 29293-2012

C Range: 0 - 360DEG  
C Interval: 30.0DEG  
Test Speed: HIGH  
Temperature:25.3DEG  
Operators:Zoe  
Test Date:2023-1-12

g Range: 0 - 180DEG  
Interval: 1.0DEG  
Test System:EVERFINE GO-SPEX500\_V1 SYSTEM V2.00.416  
Humidity:65.0%  
Test Distance:3.160m [K=1.0000]  
Remarks: LAMP:CLU028-1204C4-303H5M3-F1 Ra:90  
REFLECTOR:AP-060D-WW  
DRIVER:PRO-UA430 700mA  
30minutes warm-up

## Planar Illuminance Curve



C Range: 0 - 360DEG  
 C Interval: 30.0DEG  
 Test Speed: HIGH  
 Temperature: 25.3DEG  
 Operators: Zoe  
 Test Date: 2023-1-12

g Range: 0 - 180DEG  
 g Interval: 1.0DEG  
 Test System: EVERFINE GO-SPEX500\_V1 SYSTEM V2.00.416  
 Humidity: 65.0%  
 Test Distance: 3.160m [K=1.0000]  
 Remarks: LAMP: CLU028-1204C4-303H5M3-F1 Ra:90  
 REFLECTOR: AP-060D-WW  
 DRIVER: PRO-UA430 700mA  
 30minutes warm-up

## LUMINOUS DISTRIBUTION INTENSITY DATA

Test:U:220.28V I:0.1280A P:27.026W PF:0.9558 Freq:49.99Hz Lamp Flux:2614.7x1 lm		
NAME: 2219.200B	TYPE:	WEIGHT:
SPEC.:3000K	DIM.:	SERIAL No.:2301120041
MFR.: RISE	SUR.:0.005904m2	Shielding Angle:

Table--1

UNIT: cd

C(°) g (°)	0	30	60	90	120	150	180	210	240	270	300	330						
0	129	129	129	129	129	129	129	129	129	129	129	129						
5	126	107	100	98.8	102	112	129	162	206	244	199	154						
10	123	93.4	88.3	91.1	91.8	99.9	129	245	470	587	472	227						
15	120	83.7	114	147	122	89.6	127	420	891	1057	926	402						
20	118	72.4	158	204	164	80.7	123	697	1144	1113	1188	699						
25	117	75.5	238	318	253	91.5	118	1047	1139	1027	1181	1092						
30	122	94.9	333	183	350	119	110	1291	1066	884	1097	1368						
35	123	129	86.3	12.3	81.4	164	98.2	1413	947	718	966	1495						
40	108	173	8.84	2.14	8.74	216	76.6	1472	814	575	825	1550						
45	81.4	177	3.01	1.16	2.95	182	50.2	1481	679	452	685	1552						
50	49.8	59.5	1.63	0.20	1.52	32.8	26.9	1446	559	364	562	1505						
55	26.4	11.0	0.12	0.08	0.11	5.05	16.0	1385	463	303	469	1428						
60	15.3	3.92	0.10	0.08	0.10	3.72	13.0	1298	399	262	401	1330						
65	11.4	2.04	0.14	0.11	0.14	1.28	11.6	1191	357	230	355	1219						
70	9.81	0.40	0.24	0.17	0.23	0.45	10.5	1090	324	206	319	1112						
75	8.57	0.75	0.41	0.28	0.40	0.85	8.74	997	292	184	289	1019						
80	7.35	1.29	0.66	0.44	0.64	1.43	7.07	864	257	162	255	903						
85	5.57	1.98	0.99	0.62	0.94	2.19	5.37	608	201	127	199	676						
90	0.00	0.00	0.00	0.00	0.00	0.00	0.00	0.00	0.00	0.00	0.00	0.00						
95	0.00	0.00	0.00	0.00	0.00	0.00	0.00	0.00	0.00	0.00	0.00	0.00						
100	0.00	0.00	0.00	0.00	0.00	0.00	0.00	0.00	0.00	0.00	0.00	0.00						
105	0.00	0.00	0.00	0.00	0.00	0.00	0.00	0.00	0.00	0.00	0.00	0.00						
110	0.00	0.00	0.00	0.00	0.00	0.00	0.00	0.00	0.00	0.00	0.00	0.00						
115	0.00	0.00	0.00	0.00	0.00	0.00	0.00	0.00	0.00	0.00	0.00	0.00						
120	0.00	0.00	0.00	0.00	0.00	0.00	0.00	0.00	0.00	0.00	0.00	0.00						
125	0.00	0.00	0.00	0.00	0.00	0.00	0.00	0.00	0.00	0.00	0.00	0.00						
130	0.00	0.00	0.00	0.00	0.00	0.00	0.00	0.00	0.00	0.00	0.00	0.00						
135	0.00	0.00	0.00	0.00	0.00	0.00	0.00	0.00	0.00	0.00	0.00	0.00						
140	0.00	0.00	0.00	0.00	0.00	0.00	0.00	0.00	0.00	0.00	0.00	0.00						
145	0.00	0.00	0.00	0.00	0.00	0.00	0.00	0.00	0.00	0.00	0.00	0.00						
150	0.00	0.00	0.00	0.00	0.00	0.00	0.00	0.00	0.00	0.00	0.00	0.00						
155	0.00	0.00	0.00	0.00	0.00	0.00	0.00	0.00	0.00	0.00	0.00	0.00						
160	0.00	0.00	0.00	0.00	0.00	0.00	0.00	0.00	0.00	0.00	0.00	0.00						
165	0.00	0.00	0.00	0.00	0.00	0.00	0.00	0.00	0.00	0.00	0.00	0.00						
170	0.00	0.00	0.00	0.00	0.00	0.00	0.00	0.00	0.00	0.00	0.00	0.00						
175	0.00	0.00	0.00	0.00	0.00	0.00	0.00	0.00	0.00	0.00	0.00	0.00						
180	0.00	0.00	0.00	0.00	0.00	0.00	0.00	0.00	0.00	0.00	0.00	0.00						

C Range: 0 - 360DEG  
C Interval: 30.0DEG  
Test Speed: HIGH  
Temperature:25.3DEG  
Operators:Zoe  
Test Date:2023-1-12

g Range: 0 - 180DEG  
g Interval: 1.0DEG  
Test System:EVERFINE GO-SPEX500\_V1 SYSTEM V2.00.416  
Humidity:65.0%  
Test Distance:3.160m [K=1.0000]  
Remarks: LAMP:CLU028-1204C4-303H5M3-F1 Ra:90  
REFLECTOR:AP-060D-WW  
DRIVER:PRO-UA430 700mA  
30minutes warm-up